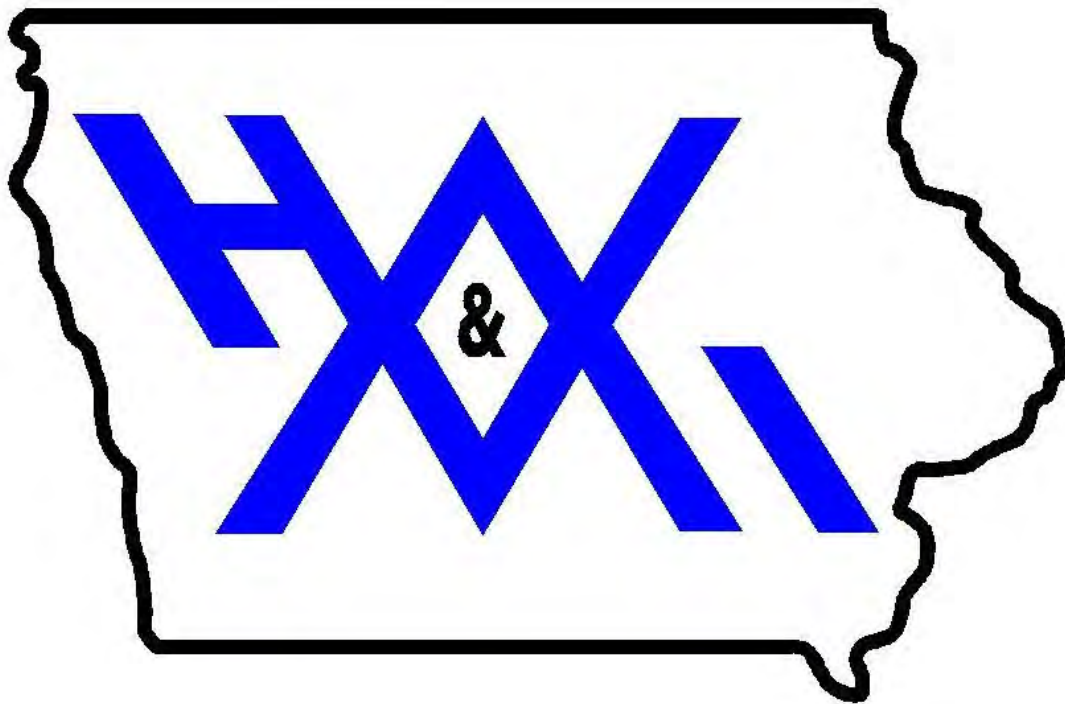


# HUFFMAN WELDING & MACHINE, INC.



6224 AVENUE O  
FORT MADISON, IA 52627  
PHONE: 319-372-7232  
FAX: (319) 372-3469  
[WWW.HUFFMANWELDING.COM](http://WWW.HUFFMANWELDING.COM)

AUGUST 2023 EDITION

## SERVICES AT HUFFMAN WELDING AND MACHINE, INC.



### Machining / Tool & Die

Full-service shop with new state of the art equipment to handle all your precision needs from huge weldments on our large cnc horizontal boring mill to precision ground tool and die parts.



### Fabrication & Welding

Certified AWS Welders in Structural, Pipe, Carbon Steel, Stainless, & Aluminum  
Our fabricators are not just welders but they understand how to efficiently and correctly fabricate your projects!



### Forming & Sheet Metal

CNC 250 ton x 12' brake with Wila Tooling, 90 ton brake, shears, and more for all your heavy to light precision forming and sheet metal needs



### Laser & Metal Cutting

Amada Fiber Laser 5'x10'  
12' x 6' Plasma & Oxyfuel Table  
CNC Miter and auto feed Marvel Saw



### Paintings and Coatings

In-House Wet Paint, blasting, and Black Oxide  
Weekly runs to powdercoat, hot dipped galvanizing and other specialty coaters

### Process Equipment & Controls Integration

Since 1971, we have been building entire factory lines from custom conveyors to full production. Contact us to learn about our experience, expert build team, and outstanding project management team.

Electrical, Pneumatic, and Hydraulic Controls

### Engineering Services

Software - Autocad, Inventor, SDS/2, Fusion 360, Sigmanest and more

Specialties – Full 3D and 2D machine and part design, reverse engineering with process improvement, strength analysis and FEA analysis,

ERP / File Management to keep track of all your custom part designs and inventory

### Manufacturing

We offer a variety of contract options for manufacturing services.

Part production or complete assembly production.

Part stock room, just in time deliveries, quality inspection and more.

Our ERP system helps keep track of your part demands and part scheduling

### Structural

*Certified Welders, Certified Materials, Certified Coatings, Certified SDS/2 Shop Detailers*

We specialize in small structural projects - miscellaneous steel, staircases, mezzanines, etc.

Equipment – Lincoln PythonX Structural Processor, CNC Saws, CNC Pressbrakes, Ironworkers, Punches, Drills and more.

### Equipment Repair & Reverse Engineering

Heavy construction equipment, industrial equipment, OEM replacement parts, and more.

Our expert team has the knowledge to properly repair and fix your broken equipment using repair methods that will last as long or longer than the original equipment!

### Installation and Site Support

We can handle the entire installation or help oversee your installation team to make sure your project gets completed and in the end zone!

Our job is not done until you are satisfied!

### On The Road Customer Service, Toolroom Supply, and Steel Sales

Our on the road sales force can supply your plant with all their toolrooms needs including hardware, drillbits, steel sales, small engine equipment, power tools, and more.

We have a large on-hand inventory of carbon steel, stainless and aluminum in sheet, plate, rounds, flats, angles, channels, tubing, rebar, and more.

Our massive on-site bolt rooms has grade 5, grade 8, A325, galvanized, stainless, SHCS, & more and we also stock a large variety of hardware at all 3 farm and home locations.

With our Huffman's Farm and Home division we can offer you a huge line card of vendors that we wholesale from [www.huffmansfarmandhome.com](http://www.huffmansfarmandhome.com)



## **RECENT ADDITIONS AT HUFFMAN'S**

2023 Amada Ventis 6KW Fiber Laser – 5'x10' tables – up to 1 1/4" carbon / 1" stainless steel

2023 Mitsubishi Wire EDM MV2400-ST Workpiece Capacity: 41.3" x 32.3" x 16.5"

Davi CNC 4-roll Roller MCA 2020 6' wide x 7/16" capacity – can roll cylinders, half moons, and cones

2022 Doosan CNC mill 48" x-axis, 24" y-axis, 20.1" z-axis with Renishaw probe

2021 Fermat CNC horizontal boring mill with 4<sup>th</sup> axis - 157.5"x-axis x 98.4"y-axis x 59.1"z-axis x 31.5" spindle travel, 22 ton table capacity, 165.4" of swing on 4<sup>th</sup> axis

2021 Lincoln Python X Structural Steel Processor with capabilities to cut up to 50 ton/week

2021 SDS/2 Automated Shop Drawing Software – In-house certified SDS/2 detailer

2021 Accurpress 250 TON x 12' 7-axis CNC Press Brake

2021 Ercolina TB60-TC CNC Programmable Pipe and Tube Bender

2021 Marvel Precision Saw 20"x25" capacity, 60 deg miter, +/-0.005 shuttle accuracy

2020 Doosan CNC mill with 4<sup>th</sup> axis

2020 Doosan CNC lathe with LIVE TOOLING and bar feeder

2018 New Lucas CNC horizontal boring mill 120"x-axis x 98"y-axis x 48"z-axis x 29" spindle travel  
332,832 kWh solar field

All new state of the art Lincoln welders with pulse technology

Now with over 65,000 sq feet and up to 10 ton overhead crane capacity

**Continued growth since 1971**







## **CNC MATERIAL CUTTING**

**Laser – Plasma – Oxyfuel – Saw – Structural Processor**

### **CNC Laser and Plasma**

- 2023 Amada Ventis 6KW Fiber Laser - 5 x 10 tables – up to 1 1/2" carbon / 1" stainless
- 6 x 12 CNC plasma table
- 6 x 12 CNC oxyfuel table
- Subcontracting partners for waterjet

### **Sawing and Shearing**

- 2021 Marvel Precision Saw 20"x25" capacity, 60 deg miter, +/-0.005 shuttle accuracy
- Hot saws, cold saws, special nibblers and material saws, and more
- Sheet metal shear up to 12GA stainless

### **Structural Steel Processing**

- Up to 36" tall material x 60' long
- Beams, Channels, Angles, Square and Rectangular Tubing, Flat Bar
- Processed complete on all 6 sides for quick, accurate processing





## **PRECISION MACHINING**

**Milling - Turning - Wire EDM - Precision Grinding**

**Manufacturing** = CNC machining up to 5000 parts

**Large capabilities** = Turning up to 165.4" diameter - CNC milling up to 157.5" x 98.4" x 60" with full 4<sup>th</sup> axis capabilities and probing capabilities

**Precision capabilities** = Precision grinding and machining to 0.0005

**State of the art technology** = CNC milling & turning, Wire EDM, 3D modeling and CAM programming, and 3D printing

Investing in new equipment yearly! See our equipment list for our full capabilities!

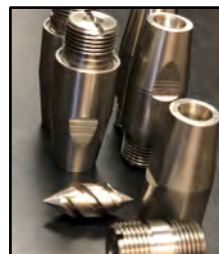
**Engineering and value creation** = Solutions for manufacturability & process improvement

Material experience = carbon steels, tools steels, castings, stainless and Nitronic 60, aluminum, specialty alloys, plastics (UHMW, Teflon, etc.)

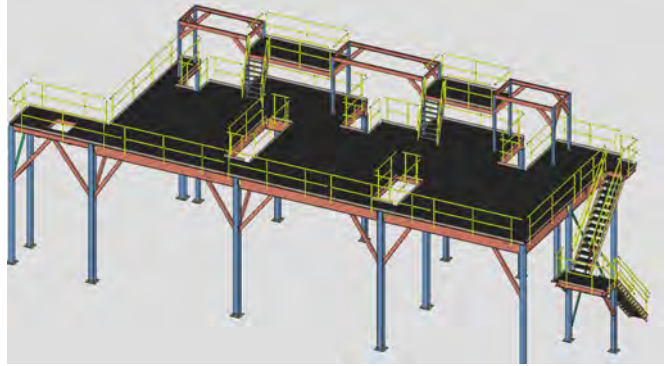
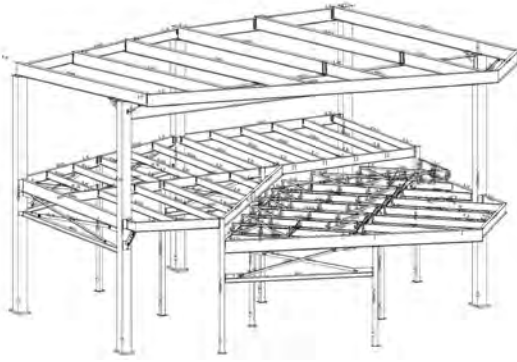
Reverse engineering available = OEM replacement parts shipped nationwide

Part fit and tolerance knowledge to help ensure proper clearance and fit of parts

**Repair machining** = Journal & housing repair, bore & bush, metalizing







## **FABRICATION - STRUCTURAL STEEL**

**Structural Steel & Misc Metals – Metal framed buildings, Staircases, Mezzanines, Platforms, Handrail (made with CNC programmable tube and pipe bender), Embeds, Rebar, Gates, Anchor Bolts**

### **2021 Lincoln PythonX Structural Processor**

#### ***STRUCTURAL STEEL FABRICATION REINVENTED***

- Process all 6 sides of up to 36" tall x 60' long structural members
- Copes, Miters, Holes, Slots, Chamfers, and more



**Other equipment includes: Forming up to 250 ton x 12', Ironworkers, Punches, Drills, stud welders, CNC Saws and availability of our full machine shop**

#### **Experience with various structural requirements:**

- Shop drawings by certified SDS 3D detailer
- ASTM and customer specs on materials, fasteners, galvanizing
- Certified AWS welders, inspection and tagging of all members
- Ercolina TB60-TC CNC Programmable Pipe and Tube Bender for handrail and more





## **FABRICATION – CUSTOM**

### **TRAINED & CERTIFIED AWS WELDERS**

We train, we certify, we manage, we inspect

### **MULTIPLE PROCESSES AND MATERIAL EXPERIENCE**

Aluminum - Stainless - Carbon - Specialty Alloys

GTAW / GMAW / SMAW / Spot and stud welding equipment

Bore welder & boring machine / Onsite capabilities for MIG, Stick and TIG

### **LARGE FACILITIES**

10 ton cranes, jib cranes, & efficient and well thought out work areas

### **TECHNOLOGY**

Utilizing the latest technology in Lincoln inverter and pulse welders

State of the art equipment for material production – 6 axis structural processor,

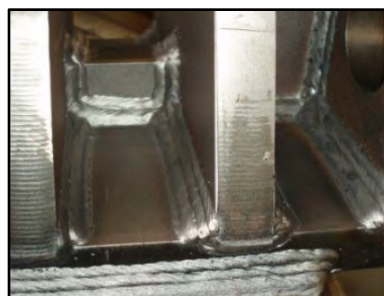
Davi CNC 4-roll roller, 7-axis 250 ton pressbrake, CNC tube bending and rolling,

drills, ironworkers, full service machine shop and more.

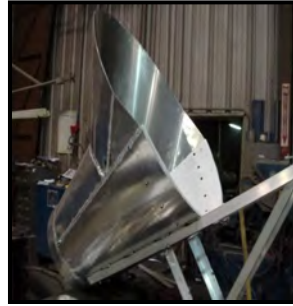
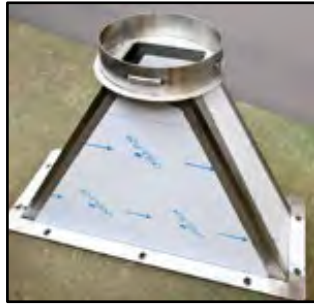
### **INSPECTIONS**

In-house Visual, Dye-Penetrant, and Magnetic Particle Inspection

3<sup>rd</sup> party inspections available as needed







## **FORMING AND SHEET METAL FABRICATION**

**MATERIAL CUTTING** – 2023 Amada 6000 fiber watt laser - can cut 1 1/2" carbon steel / 1" stainless, CNC Marvel Bandsaw, 6'x12' CNC plasma and oxyfuel cutting

**FORMING** - Accurpress 250 TON x 12' 7-axis CNC Press Brake

**ROLLING** - Davi CNC 4-roll Roller MCA 2020 6' wide x 7/16" capacity – can roll cylinders, half moons, and cones

**TUBE BENDING** - Ercolina TB60-TC CNC Programmable Pipe and Tube Bender

**TUBE ROLLING** – Cole-Tuve PK-35 Tube/Round/Angle Roller

**Spot Welder / Rivnut and other sheet metal fasteners assembly**

Our engineers can provide 3D layouts, modeling for ductwork projects, transitions layout and design, and our experienced team can ensure project success!

**Production Forming / Custom Ductwork / Transitions / Hoppers / Chutes / Tanks**





# **PAINTING, COATINGS, HEAT TREAT AND SURFACE TREATMENTS**

## **Stainless Finishes:**

HWMI is an expert in polished stainless with 1000's of projects completed in various stainless finishes.

**Passivation** - In-house passivation

**Pickling** - in-house pickling

**Polishing** - Polishing equipment with specialized finishes

**Electropolishing / plating and more**

**Food grade finishes** --- over 40 years building food grade equipment with a thorough understanding of the variety of weld finishes / CIP (clean-in-place) designs and much more

Experienced in standard Ra roughness and other finish callouts - 2B Finish / 4b brushed / 5b satin / 7b reflective / 7b mirror / 9b bead blast / 10b - electropolished

***We run the best Walter Surface Technologies equipment ensuring consistent finishes!***

## **In-House Services:**

**Blasting** - variety of media available (experience with SSPC standards and specifications)

**Wet Paint** (full filtered paint booth) - experience in a variety of specifications and standards and various quality procedures. We have worked with epoxies, polyurethanes, alkyd's and more. We have quality procedures and can meet mil thickness requirements and more. We have painted many specialty projects including items such as turbines, piping, equipment and more. Let us look at your painting needs!

**Black oxide ebonized coating in-house**

**Passivation** - Variety of stainless finishes and protective coatings with passivation of stainless welds and small jobs in-house

**Weld-Up / Spray Metalizing** for repair work

**Deburring** - hand and vibratory deburring machine

**Polishing** - HWMI has provided various polished finishes on stainless and aluminum with a variety of specialized polishing equipment in-house.

## **Partnerships:**

**Powder Coating** --- we pickup/deliver from our powder coat supplier weekly on a standard route truck.

**Yellow Zinc and Other Coatings**

**Hot Dipped Galvanizing** with expediting next day turnarounds available ASTM A123 (or any ASTM specification)

**Heat treating and Stress Relieving**- in-house and through a partner with quality documentation and testing reports available if requested

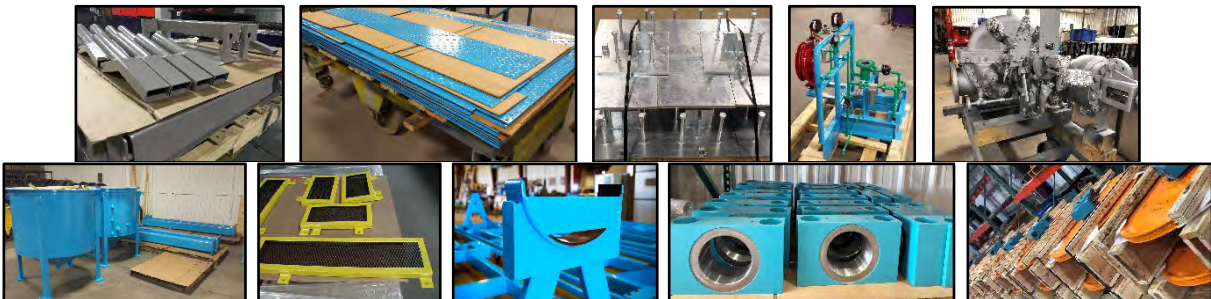
**Plasma Coatings** - all types of plasma and spray metalizing coatings

**Hard Chrome** - Hard chrome buildup up to .017" in buildup for long lasting wear components

**Heat Treatment** - Induction / carburizing / case hardening / annealing (normalization) / nitride coatings / cryogenic treatment / and more

## **Materials:**

We can partner with you in the initial design phase of your project and consult our many highly experienced designers and engineers along with our expert heat treat partners to help determine the best material for the hardness or ductility you are trying to achieve. We are experienced with almost all materials --- 4140 / 4140 PH / 4340HT / Stressproof 1144 / A2 / D2 / Nitronic / Safurex / 316 / 304 / Aluminum 3003 and 6061 / and many more!



# **QUALITY CONTROL AND INSPECTION**

## **ISO 9001:2008 COMPLIANT**

Full ISO 9001:2008 compliance manual and implementation

## **QUALITY DESIGN AND REVIEW**

3D design with review for fit, function and manufacturability

PE approvals for designs including Finite Element Analysis

## **THE RIGHT TEAM AND PROCEDURES**

The right team with experience inspecting and ensuring compliance with a variety of tolerances and design requirements

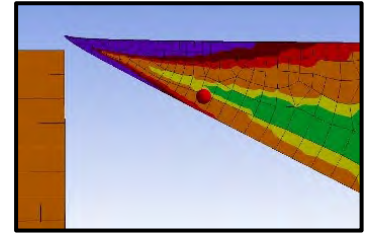
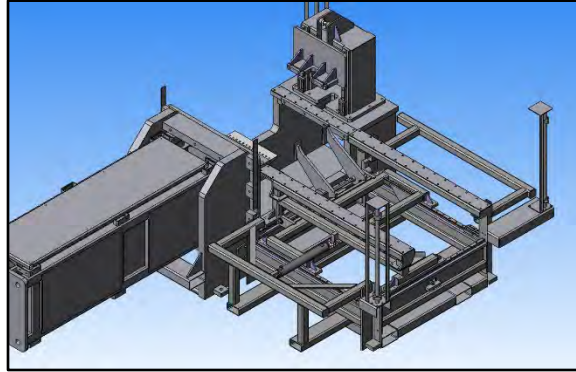
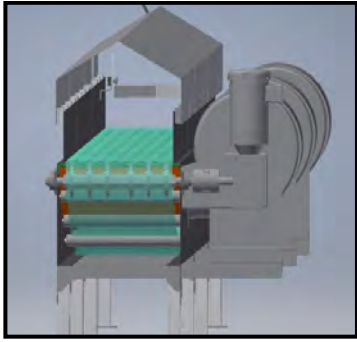
Global Shop enterprise resource planning (ERP) software and project management and scheduling, 3D design and CAM Programming, Geometric Modeling for Structural Steel SDS/2, and more

ISIR, PPAP, PPVP, Certificate of Conformance, and CPK reporting capable  
SAM approved, CMMC Cyber Security

## **THE RIGHT EQUIPMENT AND TOOLS**

- Renshaw RMP60 probe inspection
- Renishaw OMP60 probe inspection
- Multiple granite inspection tables
- Full range of precision calibrated micrometers and calipers
- Specialty micrometers for threads, internal measurements and more
- Precision calibrated height gages
- Hardness testers, paint mil gages
- Subcontract partners for laser and CMM detailed 3<sup>rd</sup> party inspections
- Fabrication In-house Visual, Dye-Penetrant, and Magnetic Particle Inspection
- Providing 100% customer satisfaction and per spec parts since 1971





**WE WORK HARD TO CREATE VALUE FOR OUR CUSTOMERS BY UNDERSTANDING YOUR PROCESSES AND DEVELOPING INNOVATIVE SOLUTIONS THROUGH DESIGN EXPERIENCE, DESIGN TECHNOLOGY, IN-HOUSE PROCESSES, AND UNDERSTANDING MANUFACTURABILITY**

## **ENGINEERING DESIGN AND PROJECT MANAGEMENT**

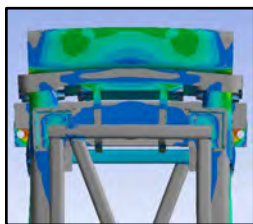
### **MECHANICAL AND PROCESS IMPROVEMENT DESIGN**

AutoCad 2D & 3D inventor / SDS structural shop drawings with PE approvals and finite element analysis / Global Shop ERP and project management and scheduling

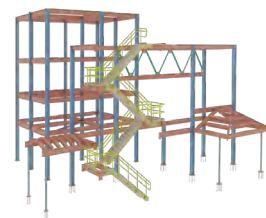
### **A LARGE TEAM OF DESIGN AND PROJECT MANAGEMENT EXPERTS WITH OVER 300 YEARS OF COMBINED EXPERIENCE**

We think outside the box and utilize technology and experience to solve your problems.

### **OUR PROCESS**



- Understand how parts or components work and the end goals for the parts
- Define and understand quality expectations
- Think outside the box and be innovative
  - Provide suggestions on improved design for function or reducing cost
- Keep you informed in all phases of the design and manufacturing process
- Quality Control – part inspection, final testing
  - We get the ball in the endzone and ensure your complete satisfaction.







## **PROCESS EQUIPMENT ASSEMBLY** **AND** **PROJECT MANAGEMENT**

**WE HAVE MANAGED AND MANUFACTURED FULL FACTORY LINES  
WITH EXPEDITED LEADTIMES AND EXCEPTIONAL VALUE**

***If you don't think it can be done. Think Again. Then Call us. That's what we do***

**Experienced Mechanical and Controls Team Members**

***We Manage Projects From Start to Finish:***

- Engineering – New design or completion of any drawings as required / understanding the needs of each project
- Procurement of all raw materials and components (Developing the best vendors since 1971)
- Fabricating all frames and parts / Machining all components
- Coatings – In-house wet paint or black oxide, and outside processes such as yellow zinc, anodizing & hard chrome
- Heat treatments – stress relieving, heat treatment (case hardening, flame and induction hardening, carburizing, etc.)
- Complete mechanical assembly
- All pneumatic and hydraulic systems and plumbing
- Wiring of main controls and components
- In-house hydraulic fittings and hose manufacturing
- PLC programming – subcontracted or we will work with your team to complete programming here for test out
- Runout, Debugging and testing before shipment
- Final skidding, crating, and shipping
- Installation support or full Installation by HWMI

**CUSTOM MATERIAL HANDLING AND PROCESSING EQUIPMENT FOR HEAVY INDUSTRIAL**



## PROCESS EQUIPMENT REBUILDS

We have a expert team to lead your equipment rebuild project. When we are done it will look and run like new! Whether it's a new build or a refurb, contact us, and see why companies have trusted us to build their equipment since 1971!

We can reverse engineer and modernize or beef up your equipment to improve areas of weakness and give you what you really want! We have made process improvements on customer process ovens, conveyors, choppers, extruders, shears, and much more.



## JOURNALS, HOUSINGS, & PART REPAIR

**Multiple repair processes in-house for quick turn-arounds!**

In-house Spray Metalizing and weld buildup of worn components

In-house Portable Bore Welder – Weld & Bore from 1.9" up to 10" Diameter x 36" outside faces

Partners in other coatings such as hard chrome buildup up to .017"

**COATINGS AVAILABLE TO MAKE YOUR REBUILT SHAFTS, JOURNALS, HOUSINGS, AND PARTS LAST LONGER**

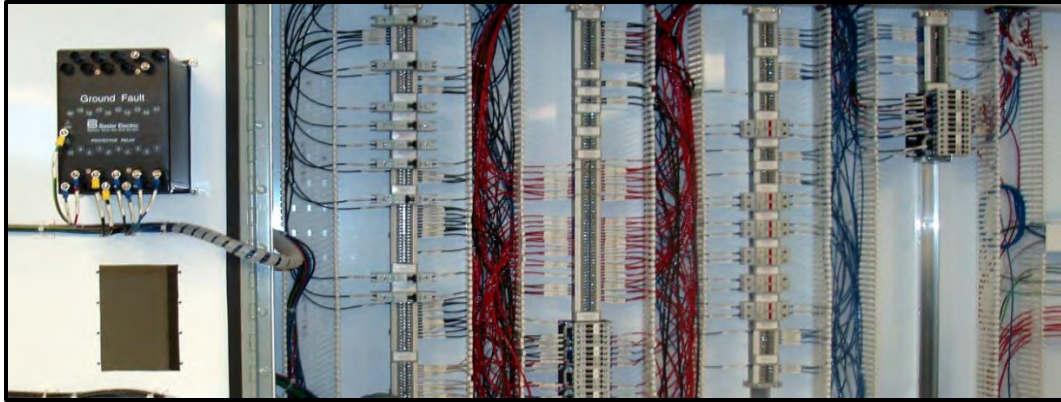


## CONSTRUCTION EQUIPMENT REPAIR

Wrecked equipment rebuilds – boom arms, buckets, sheep feet, scraper repairs, asphalt reclaimer and equipment repairs, pile driver equipment repairs, misc damaged or wrecked equipment, and much more.







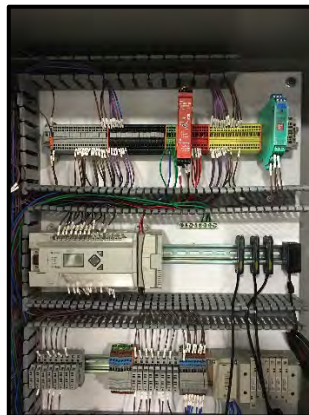
## **ELECTRICAL, PNEUMATIC, AND HYDRAULIC CONTROLS ASSEMBLY**

**In-house licensed electrician and mechanical assembly experts**

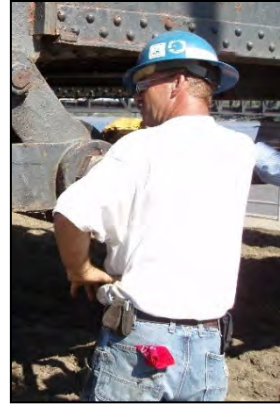
Every large production line and machine we manufacture has controls. We can work with you to do initial electrical runs back to control panels or armorblocks, do complete panels on simple systems or partner with a control panel shop or your in-house team on complex panel builds and PLC programming. We have experience in pneumatic systems and cabinets as well as complete hydraulic design/builds.

### **In-house hydraulic fittings and hose making**

Runouts and machine acceptance testing can be completed in-house with use of our motor starters, VFD controllers, pumps and other various test out equipment.







## EQUIPMENT INSTALLATION & ON-SITE WORK

Our road crew can travel to work on bridges, install projects, and help with turn-arounds.

Our craftsmen know how to handle precision installations and work safely. The team will work to effectively communicate, think outside the box, and develop solutions to keep costs down while ensuring quality.

\*\*\*Onsite welding and repair\*\*\*





## **WHY Us?**

**Convenience** - From concept to completion - one-stop turnkey shop

**Solutions** – We do what others can't and create innovative solutions to meet schedules, budgets and project goals

**Quality** – Exceeding your expectation is always a priority at Huffmans

**Safety** - Strict safety program and superior record with regular OSHA consultation visits

**Confidentiality** – We hold high confidentiality clearances with some of the largest companies and work hard to ensure your proprietary information remains yours!

**Large Capacity** – Large manufacturing spaces, In-house equipment capacity, and project management experience for big projects

**Dedication** - Focused project teams – on time, on budget. PERIOD

**Satisfaction** – Continuous improvement to make sure you are always happy

**Community, Customer, Family, and Employee Focused**



### **FULL SERVICE SHOP**

American craftsmanship, producing guaranteed quality.

From prototypes to full production, HVM has the experience and capacity to provide excellent leadtimes and pricing.



### **RELIABLE AND EXPERIENCED**

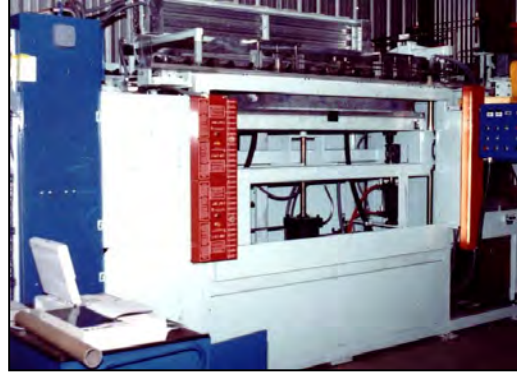
10 Project Managers with over 300 years experience. Over 110 employees total each providing excellent value and expertise.



### **THANK YOU**

Our dedicated team promises to provide value to you in all we do. We will provide you with what you need, when you need it, and at the most competitive price. We Thank You for the Opportunity!





## REFERENCES / CONFIDENTIALITY

We have a long list of references we can supply at your request. However, many of our customers ask for confidentiality and we have the strictest policies and agreements in places. Your confidential projects are secure at HWMI. We will always seek your approval before using pictures or prior to working with subcontractors, etc. We hold the highest confidentiality rating with some of the largest industries in America and the government allowing us to build some of the most proprietary equipment in our secure facility.

Huffman's has grown since 1971 by word of mouth due to the quality of work and level of service we provide. Our customers continue to come back to us time and time again.

Let us show you why Huffman's is a trusted source for all your projects.

Our key customers include those in the rubber, ammunition, steel production, foundries, chemical production, fertilizer production, commercial construction, agricultural equipment manufacturers, food grade equipment, automotive manufacturers, plastic and polyurethane injection and rotational molding, power generation, locomotive bridges, and the United States Government.

**Duns Number: 055804850 Cage Code: 3FQD1 TPIN #: 45993923**  
**GOVERNMENT SAM AND CYBERSECURITY APPROVED**  
**Small Business / Hubzone Business**







Full Paint Booth



Large Capacity Turning and Milling



Forming up to 250 tons x 12'



CNC Technology --- HWMI is efficiently manufacturing for tomorrow

## OUR EQUIPMENT AND FACILITIES



Boring up to 120" x 98" x 29" with Cat50 Spindle



Fully automated 6 axis structural processor



Large Inventory of Fasteners and Parts



Large Saw Cutting and Material Handling



Large Steel Supply Warehouses



Full Service Sales, Supply, and Trucking Services



WIRE EDM



Continuously Upgrading and Improving Our Processes and Systems



#### **Team Capabilities**

- Founded in 1971 with over 110 employees companywide and 55 at Huffman Welding & Machine, Inc. division with many craftsmen having over 60 years and 100,000+ hours of experience in machining, fabrication, machine building, equipment repair, specialty repair, quality inspection, and material cutting and supply.

#### **Fabrication and Welding**

- Lincoln Structural Steel 6 axis processor as noted below under "material cutting"  
- MIG, TIG, Stick, Spot - Carbon, Stainless, Aluminum, Specialty Alloys  
- On-Site MIG, TIG, and Stick for Stainless and Carbon  
- Onsite MIG for Aluminum  
- 15+ Welding Power Sources. - We run new Lincoln electric welders with pulse-on-pulse and power mode technology and inverter technology. 500+ amp units and more  
- Automatic weld positioners and rollers and other fixturing  
- Portable pipe and plate chamfer milling machine  
- Bore welder and boring machine 1.9" up to 10" bores  
- Nelson stud welder up to ½" dia  
- In-house Visual, Dye-Penetrant, and Magnetic Particle Inspection

#### **Plate and Tube – Forming / Rolling / Bending**

FORMING - 2020 Accupress - 7-axis CNC, 250 TON x 12', 12" stroke  
--- Utilizing the world's most accurate pressbrake and tooling technology  
--- Precision WILA new standard tooling including goosenecks and roll-a-vee  
--- Box Brake for light GA box forming  
ROLLING - Davi CNC 4-roll Roller MCA 2020 6' wide x 7/16" capacity – can roll cylinders, half moons, and cones  
TUBE BENDING - Ercolina TB60-TC CNC Programmable Pipe and Tube Bender  
TUBE ROLLING – Cole-Tuve PK-35 Tube/Round/Angle Roller  
Fastening - Spot Welder / Rivnut and other sheet metal fasteners assembly

#### **Material Cutting - CNC Laser, Plasma, Oxyfuel, Structural Processor**

- Lincoln PythonX Structural processor – 6 sided processing 36" tall x 60' long for beams, channels, angles, square and rectangular tubing for all copes, miters, holes, slots, chamfers, etc.  
- Amada 6000W Fiber Laser with 5x10 table - up to 1 1/2" carbon and 1" stainless thickness capacity  
- CNC Plasma and Oxyfuel Table with 6x12 table up to 12" thick capacity  
- Subcontracting partners for waterjet  
- Multiple handheld high-powered plasma and acetylene torches and air arc machines  
- Pexto Shear - 10' x 10 ga - 1/4" x 3'

#### **Saw Cutting**

- Marvel Precision Vertical with Miter Cut Bandsaw - VT5063SW fully automatic 20x25" capacity, 20" rounds, At 45 deg - 20x17 or 17 on rounds, At 60deg 20x11.25" or 11.25 rounds. 1 1/2" blade Flood and mist coolant Position accuracy of +/-0.005 Stock cut lengths for machining of no more than .040" over machined lengths on large parts  
- Automatic-band saws, hot saws, cold saws, special nibblers and material saws, and more.

#### **Painting, Sandblasting and Special Coatings**

- Large exhausted wet paint booth  
- Various size sandblasters (large capacity for big vehicles/equipment)  
- Cleanroom for clean part drying  
- In-house spray metalizing  
- In-house black oxide coating system  
- Subcontracting partners for powder coating, galvanizing, heat treat, plasma coatings, and hard chrome buildup up to .017" and more

#### **In-House Shaft and Journal Repair (Welding & Spray Metalizing)**

- Weldup of any shaft end or any diameter with automated weld positioners  
- Spray metalizing with buildup capabilities between 3/16"-1/4"  
- Bore Welder 1.9" up to 10" bores up to 10" deep roughly 36" long outside to outside on faces  
- H-frame presses up to 150 ton x 4' x 8 1/2' for removal/installation of bushings, bearings, gears and more

#### **Material Handling**

- Cranes spanning 275' long with 18' hook height / 30 TON capacity  
- Network of overhead cranes and jib cranes throughout facility for efficient movement of material  
- 12+ forklifts that move material up to 15,000 lbs

#### **Wire EDM**

- 2023 Mitsubishi Wire EDM MV2400-ST Workpiece Capacity: 41.3" x 32.3" x 16.5"

#### **Milling - CNC large horizontal capacity up to 157.5" x 98.4" x 31.5" with 22 ton table capacity and 3 mills with 4<sup>th</sup> axis including largest new CNC boring mill**

- CNC Femat WFT 13 New 2021 horizontal boring mill with full 4<sup>th</sup> axis rotary table. 157.5" on x-axis, 98.4" y-axis, 59.1" Z-axis, 31.5 w-axis, Swing of 165.4" diameter on 4<sup>th</sup> axis with max cutting diameter of 115.2", 22 ton table with size 70.8"x86.6", 5.1" cat 50 spindle with 31.5" of travel. 40 tool changer and Fanuc 31iB controller and Renishaw RMP60 probe, and 90 degree rotatable head  
- CNC Lucas purchased new 2018 40T1210 horizontal boring mill with 20 ton table capacity and range of 120" x-axis x 98" y-axis, 5.1" Cat 50 spindle with 29" of travel. 32 tool changer and Fanuc Oi-MF controller. 90 degree rotatable head  
- Doosan (2) – 1 each 2022 / 1 each 2020 CNC vertical mill - 41.3" x-axis x 22.4" y-axis, 20.1" z-axis and 4<sup>th</sup> axis milling with Renishaw OMP60 probe  
- 2ea purchased 2017 Acer CNC toolroom mills including 4th axis CNC capabilities  
- Multiple traditional horizontal and vertical mills up to - 4" spindle, 84" cross travel, 74" on y-axis, 60" vertical with a 4" x 36" spindle

#### **Turning – CNC with live tooling for milling and bar feeders / Large Capacity Lathes up to 60"**

- Doosan purchased new 2020 CNC lathe with live milling tooling - GT3100M with 28.3" over bed, 23.2" over saddle and up to 49" between centers, turret with hydraulic chuck and bar feeder up to 4" dia and live tooling for milling, 2800RPM Spindle, 47HP  
- Milltronics CNC lathe with 18" chuck x 24" of travel x 48" between centers  
- Monarch lathe 60" dia. x 108" length (50" over carriage)  
- LeBlond lathe - 48" x 216" length  
- Using our heavy duty steady rests and rollers we can machined shafts over 35 feet long  
- 8+ other lathes for specialty jobs

#### **Precision Grinding**

- Blanchard Grinding up to 36"  
- Cylindrical Grinding 14" x 4'  
- Surface Grinding 10" x 2'

#### **HWMI Heat Treat**

- Oven Dimensions: Inside 8" Tall x 11 1/4" Wide x 16" Long  
- Subcontracting partners for larger items that need heat treat or stress relieving, etc.

#### **Quality and Inspection – ISO 9001:2008 Compliant**

- Renishaw OMP60 probe and Renishaw RMP60 probe  
- Climate controlled inspection room  
- Multiple granite inspection tables  
- Full range of precision calibrated micrometers and calipers  
- Specialty micrometers for threads, internal measurements  
- Precision height gage  
- Hardness testers, paint Mil gage  
- Subcontract partners for laser and CMM detailed 3<sup>rd</sup> party inspections  
- Fabrication - In-house Visual, Dye-Penetrant, and Magnetic Particle Inspection  
- Providing 100% customer satisfaction and quality approved parts since 1971

#### **Floor Space**

- Over 65,000 Sq Feet of building. assembly/fabrication capabilities for assemblies over 275' long. Contact us for all your large fabrications and projects.

#### **Trucking and Delivery**

- Full fleet of delivery trucks including box trucks and semi flatbeds

#### **Material Supply and Inventory**

- We have much of the material needed for jobs on-hand and available the day of the job.  
- Industrial supply inventory at HWMI/HF&H is one of the area's largest for hardware of all grades and types, metal inventory of carbon, stainless, and aluminum, pipe and pipe fittings, hydraulic fittings and custom hose, & more  
- 3 Farm and Home retail locations (see [www.huffmansfarmandhome.com](http://www.huffmansfarmandhome.com))

### Huffman Family Management Team



**MIKE HUFFMAN**



**BOB HUFFMAN**  
PRESIDENT



**HANK HUFFMAN**  
VICE PRESIDENT



**JASON HUFFMAN**  
VICE PRESIDENT

**THANK YOU FOR TRUSTING US SINCE 1971**  
**WE WORK TO PROVIDE THE BEST SERVICE**  
**AND INNOVATIVE SOLUTIONS TO YOUR PROBLEMS**

### Project Management and Engineering Team



Jeff Morgan  
Shop Foreman



Jeff Fasching  
Senior Project Manager



Steve Norton  
Project Manager



Lonnie Lucas  
Project Manager



Mateo Alvarez  
Drafting and Design

Jesse Gerst  
Drafting and Design

### Outside Sales and Customer Service Team



Chad Demoss  
Outside Sales / Special Projects  
Prior Maintenance Specialist  
319-470-5373

[cdemoss@huffmanwelding.com](mailto:cdemoss@huffmanwelding.com)



Casey King  
Outside Sales  
Toolroom Stock and Supply  
319-470-1207

[cking@huffmanwelding.com](mailto:cking@huffmanwelding.com)



Scott Swanson  
Inside Sales Tools and Metal  
Metal / Hardware / Tools and Walk In Jobs  
319-372-7232

[sswanson@huffmanwelding.com](mailto:sswanson@huffmanwelding.com)